



**Vacuum Cleaner  
2 IN 1  
MVC-SC861R & MVC-SC861B  
Instruction manual**



Made in China



Dear Customer,  
Congratulations on your purchase of a Handheld and Floor Vacuum Cleaner! As a handheld vacuum cleaner it is always ready waiting if you want to remove a few crumbs or give your upholstery a clean. As a floor vacuum cleaner it can also easily cope with large areas. The scope of supply also includes a floor nozzle attachment and a crevice nozzle to cater for a wide range of uses. We are sure that this appliance will do sterling service for many years.



Before using the device for the first time, please read the instructions through carefully and store them in a safe place. If the device is given to someone else, it should always be accompanied by these instructions. The manufacturer and importer will not accept liability if the directions in these instructions are not observed!

We reserve the right to modify the product, packaging or enclosed documentation at any time in conjunction with our policy of continuous development.

## Symbols used in the manual:



Warning about hazards involving major risk.



Tips and recommendations are marked with this symbol.

## Safety information

### Proper use

The appliance is used to vacuum up the dust occurring in any home. It is only designed for



#### Warning about improper use

- Under no circumstances should the appliance be used on the following:
  - Liquids or wet materials (e. g. carpet shampoo when wet)
  - Glowing ash, cigarette ends, matches etc.
  - Combustible or inflammable substances
  - Very fine dust (e. g. concrete dust) or toner
  - Hard, pointed objects such as large splinters of glass



#### Risk to children

- Keep the appliance out of the reach of children. Improper use may result in injury or electric shock.
- Keep packaging away from children (risk of suffocation).
- This appliance is not designed to be used by people (including children) with limited physical, sensory or mental capabilities or people without adequate experience and/or understanding unless supervised by someone responsible for their safety.
- Children must be supervised to ensure that they do not play with the appliance.



#### Risk of electrocution

- Never immerse the appliance in water or other liquids as there is a risk of electric shock.
- Never touch the appliance with wet hands. Do not use the appliance outside or in rooms with high humidity levels.
- When using the appliance as a handheld vacuum cleaner to clean cars, make sure it is not exposed to rain or moisture.
- Never vacuum up liquids.
- Only store the appliance indoors in a dry place.
- Immediately remove the power plug from the electrical outlet in the event of any damage or malfunction.

- CAUTION:** Acute danger to life from electrocution! Never try to repair an electrical appliance yourself. For your own safety take or send it in to your nearest customer service centre / specialist repair shop. This also applies to the power cable.
- Do not use the appliance if there is damage to the cable, plug or the vacuum cleaner itself.
- Never drag on the power cable or carry the appliance by the cable. Always handle the power cable with care. Make sure the cable does not get caught in doors or dragged over sharp edges or corners. Keep the cable away from hot surfaces.
- Before connecting the appliance to the electrical outlet, make sure the voltage matches the specifications on the nameplate of the appliance.
- The appliance must be switched off when the power plug is removed or inserted in the wall outlet.
- Disconnect the plug from the wall outlet during storms.
- When removing the plug from the outlet, always pull on the plug and NOT the cable, Only touch the plug with dry hands.
- The appliance should never be used outside.



### **Risk of injury**

- Never hold the crevice nozzle close to the body or it may stick to the skin. If the nozzle does get stuck, set the On/Off switch to **0** immediately.



### **Caution when in use**

- After rinsing, the dust filter and motor protection filter must be completely dry before being reinserted.
- Only use the appliance again once it has been fully reassembled and both filters (dust filter and motor protection filter) have been reinserted.
- For your own safety, check the appliance for damage before use. If defective, the appliance should not be used until it has been repaired by a qualified technician. If the power cord is damaged, it should be replaced by a qualified technician to avoid risk.
- Once connected, the power cord should be placed so that no one can trip over them.
- Do not insert anything into the openings / nozzles of the appliance and make sure that they do not become blocked.
- Before changing nozzles, always switch the vacuum cleaner off beforehand.
- Never leave the appliance unattended when switched on.
- When interrupting work and after use switch the appliance off and unplug.
- Only use genuine manufacturer accessories.



### **Caution with malfunctions**

- Before checking the appliance for blockages or dealing with them, switch the vacuum cleaner off and remove the plug.
- Do not insert objects in the appliance: they might touch live parts.
- If liquids or foreign bodies get inside the appliance, unplug immediately. Have the appliance checked before reusing.



### **Damage to property / appliance**

- Never place heavy objects on the appliance.
- Protect the appliance from heat, naked flame, direct sunlight and shocks. Do not drop the appliance.



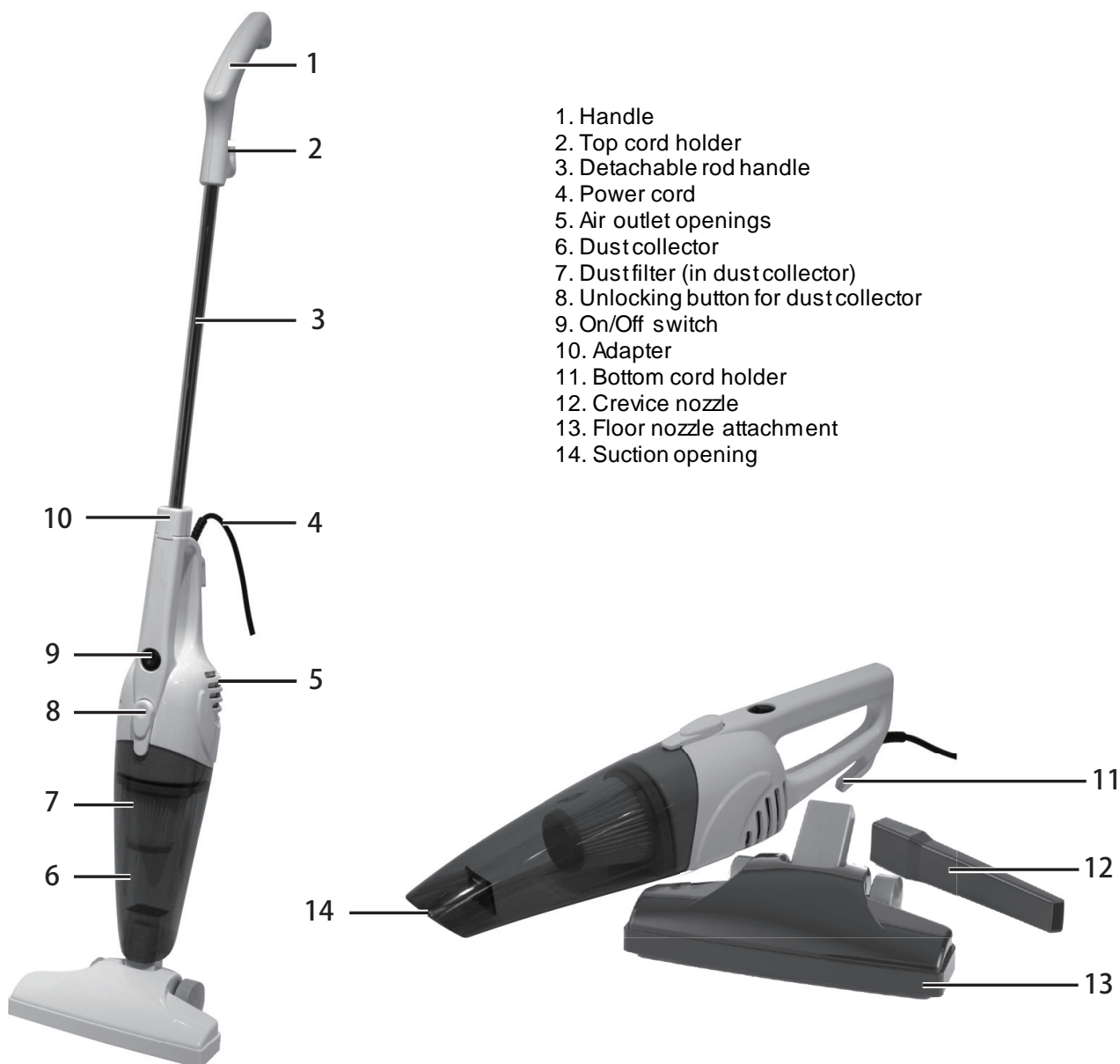
### **Caution when cleaning appliance**

- Clean the filters regularly, especially when you notice the suction has weakened. The motor might otherwise become overloaded.
- Always unplug the appliance from the wall outlet before cleaning.
- The dust filter and motor filter should not be cleaned in the washing machine.
- Always allow filters to dry in the air. Never use a hair dryer.
- Do not use caustic or abrasive products to clean the housing or you may damage the surface.

### Warranty Terms

- The following are excluded from the warranty: all defects caused by improper handling, damage or unauthorized attempts to repair. The same applies for normal wear.
- Length of Warranty: 90 days from date of purchase.
- Within 90 days from date of purchase, return product to place of purchase along with the original receipt.

### List of parts



## Assembly

### Conversion from handheld to floor vacuum cleaner

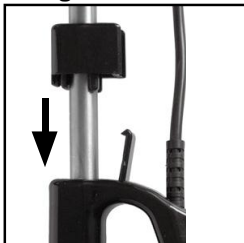
Remove all parts from the packaging and place carefully on a flat area. If necessary, put protective sheeting underneath to avoid harm to easily damaged surfaces. Carefully remove all packing materials. Compare the contents with the list of parts.



### Using as a handheld vacuum cleaner

The 2 in 1 Vacuum Cleaner is ready for use as a handheld appliance as soon as it has been unpacked.

### Using as a floor vacuum cleaner



1. Open the little flap on the handle of the handheld vacuum cleaner.
2. Insert the rod handle in the opening in the handle and push in as far as it will go.



3. Press the flap against the adapter so that it snaps into place.

### Removing rod handle

4. Open the flap.
5. Pull out the rod handle.
6. Close the flap on the handle again.

## Accessories

### Fitting and removing nozzles



#### CAUTION

- Before changing nozzles, always switch the vacuum cleaner off first.
- When fitting nozzles, insert in the suction opening.
- To remove nozzles, pull out of the suction opening.

### Floor nozzle attachment



The floor nozzle attachment is suitable for both carpets and smooth floors.

### Crevice nozzle



#### CAUTION

Risk of injury! Never hold the crevice nozzle close to the body or it may stick to the skin. If the nozzle does get stuck, set the On/Off switch to **0** immediately.



The crevice nozzle is designed for upholstery, cleaning the interior of cars and for getting into all corners and cracks that are inaccessible with the floor nozzle attachment or without a nozzle.

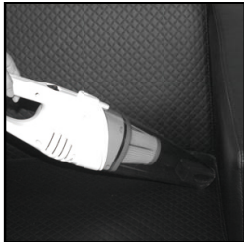
## Preparing to use the appliance



#### CAUTION

- Only switch the vacuum cleaner on once you have checked that all parts are fully assembled and all filters correctly inserted.
- Under no circumstances should the appliance be used on the following:
  - Liquids or wet materials (e. g. carpet shampoo when wet)
  - Glowing ash, cigarette ends, matches etc.
  - Combustible or in flammable substances
  - Very fine dust (e. g. concrete dust) or toner
  - Hard, pointed objects such as large splinters of glass

1. Fit or remove the rod handle depending on whether you want to use the vacuum cleaner as a handheld or a floor appliance.



2. You can use the vacuum cleaner either without a nozzle or fit one of the nozzles to the suction opening.



3. To quickly unwind the cable from the floor vacuum cleaner, twist down the cord holder on the top handle.

4. Insert the power plug in a wall outlet.

5. Set the On/Off switch to **I**.

6. Move the suction opening or nozzle over the surface to be cleaned.

7. After finishing vacuuming, set the On/Off switch to **0** and unplug.

8. After use, always empty the dust collector and clean the dust filter.

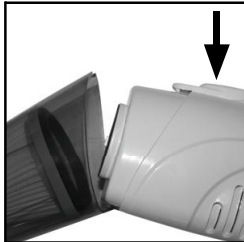
## Cleaning



### CAUTION

- Remove the power plug before cleaning and / or putting away.
- Do not use caustic or abrasive products to clean the housing or you may damage the surface.
- Never immerse the appliance in water.

## Emptying dust collector and cleaning dust filter.



1. Hold down the unlocking button for the dust collector and carefully remove.



2. Hold the dust collector over a dustbin, carefully remove the dust filter and empty the dust collector.
3. Bang the dust filter gently.

4. Then wash the dust filter under cold running water.

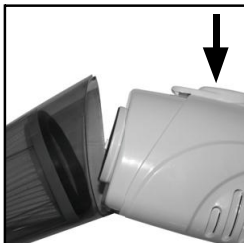
**CAUTION: Do not wash the dust filter in the washing machine.**

5. Leave the dust filter to dry in the air **for 24 hours until completely dry** before reinserting.

**CAUTION: Never use a hair dryer.**

6. Press the dust filter firmly back into the dust collector so it fits closely all round the wall of the housing.

**CAUTION: Never use the vacuum cleaner without the dust filter inserted.**



7. First insert the dust filter in the bottom of the appliance and then close. Press the unlocking button for the dust collector to engage. The dust collector must have securely engaged at the top and bottom of the appliance.

## Cleaning or replacing motor protection filter



Once you have removed the dust collector, you will find a piece of non-woven material on the open side of the appliance. This is the motor protection filter. It needs to be cleaned from time to time.

1. Remove the motor protection filter from the appliance and bang off the dust.
2. Rinse with lukewarm water.
3. Then give the motor protection filter a good shake and leave to dry off completely.

**CAUTION: Never insert the motor protection filter while still damp.**

4. Check the motor protection filter for damage and replace with a new one if necessary.
5. Reinsert the motor protection filter.

## Cleaning housing

Clean the housing with a slightly damp, soft cloth if necessary.



## Storage



- Once you have fitted the rod handle, you can wind the cord around the two cord holders before putting away.



- To quickly unwind the cable next time you use it, twist down the cord holder on the top handle.

- The vacuum cleaner should be stored indoors in a cool, dry place.

## Troubleshooting

If your appliance does not function, is damaged or requires a spare part, please do not make any repairs yourself for your own safety.

The following table contains tips on how to deal with minor problems yourself:

<b>Problem</b>	<b>Causes, Solutions, Tips</b>
No suction action.	Check that the power plug is inserted properly in the wall socket.
The suction capacity is too weak.	<ul style="list-style-type: none"><li>• Is the dust collector full? Empty the dust collector.</li><li>• Is the dustfilter heavily soiled? Clean the filter and leave to dry for 24 hours.</li><li>• Is the suction opening or nozzle blocked? Unplug and remove the blockage.</li></ul>
Dust escapes from the appliance during use.	<ul style="list-style-type: none"><li>• Is the dust collector full? Empty the dust collector.</li><li>• Has the dustfilter not been inserted properly? Press the dust filter firmly into the dust collector so it fits closely all-round the wall of the housing.</li></ul>
Strange smell	When the appliance is used for the first time, it is normal for it to smell new: this will disappear over time.

## Technical specifications

Model: MVC-SC861R & MVC-SC861B  
Power supply: 220-240V~50/60Hz  
Power consumption: 600 W  
Protection class: II



美的手持推杆二合一吸尘器使用说明书  
**MVC-SC861R & MVC-SC861B**



中国制造

尊敬的顾客，

感谢您购买美的手持推杆二合一吸尘器。作为手持吸尘器，它便携易用，可以轻松地为您清洁室内家具，解决碎屑烦恼。作为推杆式吸尘器，它可以很轻松的完成大面积室内地面清洁工作。它设计轻巧，使用简便，是您家居清洁的得力助手。



#### 使用须知：

首次使用吸尘器前请仔细阅读使用说明书，并妥善保管。如果吸尘器转手他人，使用说明书应和产品一起交付。因为不按照说明书使用，由操作不当引发的相关问题，制造商和进口商将不予承担责任。为了适应不断发展的政策，我们保留对产品，产品包装及相关附件的修订权。

#### 符号说明：



危险警告



意见和建议

#### 安全使用须知：

本产品仅限室内使用。



#### 不当操作警告：

严禁吸入以下物体，否则可能会损坏吸尘器或引起火灾，造成意外伤害。

- 液体和潮湿物体（如，潮湿的地毯清洗液）
- 发热物体，如炭头，烟头。
- 易燃易爆物品。
- 有害物品，如溶剂，腐蚀剂，酸剂等。
- 大截锐利碎片，如玻璃



#### 远离儿童

切勿让儿童玩弄，操作吸尘器，以免发生意外

产品包装要远离儿童，以免引起窒息。

智力或者生理有障碍的成人或儿童不宜使用本产品。



#### 触电危险

切忌将本产品投入水中或者其它液体，以免触电引发火灾

双手潮湿时请勿使用本产品。请勿在高湿度的环境下使用本产品。

本产品作为手持吸尘器清理汽车时，请避免雨天开窗或者高湿度环境。

室内干燥环境存放本产品。

如有产品故障，请立即切断电源。

注意：为保障您的人身安全，请勿自己维修本产品。如出现故障，请将本产品送至最近的服务站点进行维修。

严禁在产品，电源线或者电源线插头损坏的情况下使用本产品。

切勿拖拉电源线来移动本吸尘器。禁止将电源线缠绕在门上或者锋利的边缘。禁止将电源线至于发热的表面。

使用本产品前请检查供电电压与产品铭牌上标注电压保持一致。  
拔出插头前请关闭本产品。  
雷雨天气请勿将插头连接电源。  
切断电源线时请用干手拿住插头塑料部位拔下插头，避免拉开电源线。



### 意外伤害

扁吸嘴请远离身体以免造成伤害。如果扁吸嘴堵塞，请立即将开关调至0。



### 使用注意事项：

滤网，电机保护网层需完全干燥后才可重新装入本产品。  
请在配件及滤网完全及正确组装的情况下使用本产品。  
为了您的人身安全，使用此产品是请检查产品和电源插头及电源线是否有损坏。如果损坏请联系专业的维修机构进行维修。  
此产品工作时，电源线请合理放置以免将人绊倒。  
吸口必须永远保持通畅的状态，并且没有异物堵塞。否则，将引起马达过热造成事故。  
更换扁吸嘴时请关闭本产品。  
本产品打开后必须使用者不得离开。离开请关闭并拔出电源线。  
本产品暂停工作或者停止工作时请拔出电源线。  
请使用原厂供应配件。



### 保养注意事项

检查吸口是否堵塞之前，请关闭开关并拔出电源线。  
请不要在此产品内放异物以免损坏核心部件。  
如此产品内不慎进入液体或者异物，使用之前请全面检查此产品。



### 注意损伤

本产品上勿放重物。  
请勿将本产品接近热源，辐射源，火源或燃烧的香烟头。



### 清洁注意事项

定期清洁滤网，尤其是注意到本产品吸力减弱时。否则会引起电机超负荷工作。  
本产品清洗前请确保拔下电源线。  
请勿使用洗衣机清洁尘杯过滤器。  
请勿使用吹风机干燥过滤器。需自然晾干。  
请勿使用腐蚀性或摩擦性产品清洁本产品表面以免损伤产品表层。

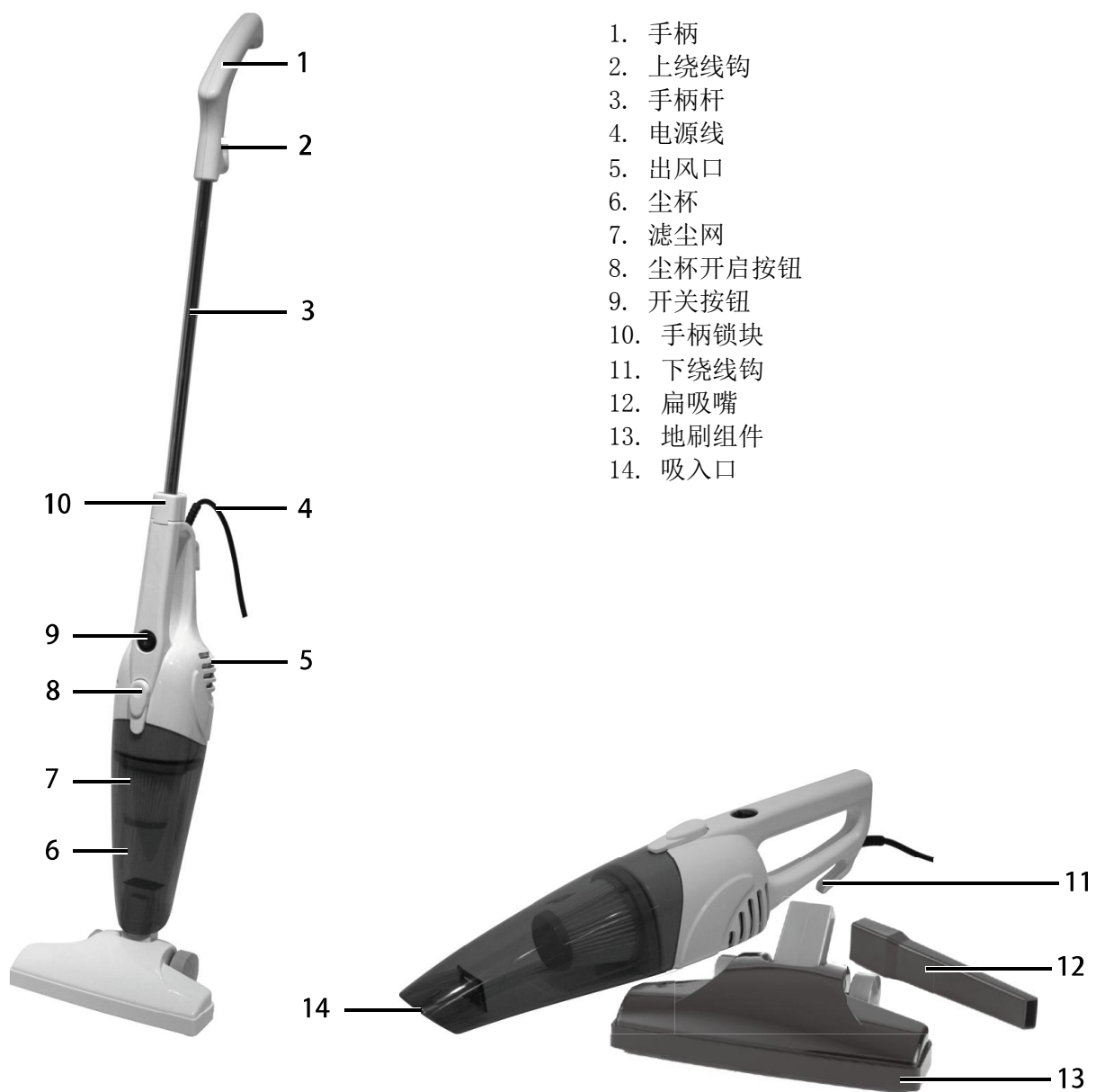
### 保修说明：

以下情况恕不免费维修：消费者使用，保管，维修不当造成损坏。非本公司指定维修部自行拆装修理造成损坏。因不可抗力造成损坏。

保修期限：购买之日起90

购买之日起90天内，请将本产品和购机发票一同带到购买地点申请免费维修。

## 产品零部件名称



## 组装

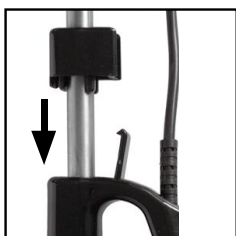
### 将手持吸尘器组装为推杆吸尘器

将各零部件从包装里面小心取出放在一块空地上。最好在地面上铺一层保护物以免损伤产品表面。对照说明书一一检查每款零部件。



#### 手持式吸尘器

包装打开后，本产品即可当做手持式吸尘器来使用。



#### 推杆式吸尘器

1. 打开手持机上的手柄开关。
2. 将手柄杆插入直到手柄锁块锁紧。



3. 将手柄开关关闭，并且按牢。

### 拆除手柄杆

4. 打开手柄锁块。
5. 拔出手柄杆。
6. 重新关闭手柄锁块。

## 配件

### 安装和拆除扁吸嘴



#### 注意

更换扁吸嘴前，请保持本产品关闭状态。

- 将扁吸嘴插入吸入口进行安装。
- 不需使用时将扁吸嘴从吸入口移除。



### 地刷组件

地刷组件适用于地毯，地板和瓷砖等光滑地面。

### 扁吸嘴



#### 注意

注意伤害！ 扁吸嘴请远离身体以免造成伤害。如果扁吸嘴堵塞，请立即将开关键调至**0**。



扁吸嘴适用于清洁缝隙，角落，护墙板及衬垫缝隙等；

### 操作指导



#### 注意

使用前请检查此产品所有零部件已经正确安装  
严禁吸入以下物体，否则可能会损坏吸尘器或引起火灾，造成意外伤害。

- 液体和潮湿物体（如，潮湿的地毯清洗液）
- 发热物体，如炭头，烟头。
- 易燃易爆物品
- 有害物品，如溶剂，腐蚀剂，酸剂等。
- 大截锐利碎片，如玻璃

1. 根据您需要使用手持吸尘器或推杆吸尘器决定取下或者安装手柄杆。



2. 您可根据实际情况选择是否使用吸嘴。



3. 需要释放电源线时，只要向左或者向右旋转上绕线钩即可快速释放电源线。

4. 将电源插头插入电源

5. 将开关按钮调至 **I**。

6. 将吸入口或扁吸嘴靠近需要清洁的区域。



7. 完成使用后请将开关调至**0**并移除电源线。
8. 为了达到最好的效果，请每次使用完毕后清空尘杯，清理尘杯过滤器。

## 清洁



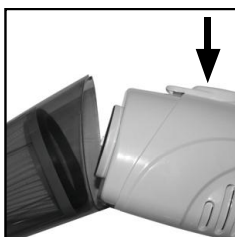
### 注意

清洗本产品之前请将电源线插头移除。

请勿使用腐蚀性或摩擦性产品清洁本产品表面以免损伤产品表层。

切勿将本产品浸入水中或其它液体中。

## 清空尘杯，清洗滤网



1. 按住尘杯开启按钮，从机身上取出尘杯

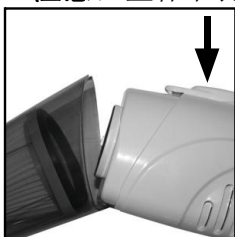


2. 在某个垃圾桶上方取出尘杯过滤器，清空尘杯。
3. 轻轻拍打尘杯过滤器。

4. 若过滤器堵塞可在冷水中清洗过滤器，晾晒24小时后装在尘杯里面。

**注意：切勿在洗衣机里清洗过滤器**

**注意：尘杯未装好前请勿使用本产品。**



5. 首先，将滤网插入本产品的底部并关闭。按住尘杯开启按钮。尘杯需要安全紧固的固定在机身上下才可使用。

## 清洗或更换电机保护网



尘杯取下后，你会发现在本产品出口处有一块无纺材料的保护层，这就是电机保护层。这里需要经常清洗。

1. 从机身上取消电机保护层并轻轻拍打灰尘。
2. 用温水冲洗
3. 轻轻要出积水并在阴凉干燥处晾至完全干燥。

**注意：**切勿将潮湿的电机保护层装进本产品。

4. 检查电机保护层是否有损坏，如有必要，需要更换新品。
5. 重新插入电机保护测

### 清洁表层

用柔软略湿的软布擦拭表层。

### 储存



本产品安装完成后，放置前将电源线缠绕上上下下绕线钩上。



为了下次能够快速使用，将电源在绕在绕线钩上。

- 本产品需要存放在阴凉干燥处。

### 常见故障排除方法

为了您的安全，当吸尘器不能正常工作时，请勿随意维修。下表格为您展示了一些小故障的处理方法；

故障现象	可能原因及处理方法
吸尘器不工作	插头插接不良。-插好插头 其它问题-联系售后服务
吸尘器吸力差	<ul style="list-style-type: none"><li>• 尘杯已满 清空尘杯</li><li>• 尘杯需清理或者更换 清理尘杯或更换过滤器</li><li>吸入口或者扁吸嘴堵塞 疏通吸入口或扁吸嘴</li></ul>
灰尘从机器中泄露出来	<ul style="list-style-type: none"><li>• 尘杯已满 清空尘杯</li><li>• 过滤器未正确安装 重新安装过滤器</li></ul>
异味	此产品初次使用时会有一些异味，这些异味会随着使用次数增多慢慢小时

### 技术参数

型号：MVC-SC861R & MVC-SC861B

电压：220V~50Hz

功率：600W

防护等级：II

