

Dear customer, thank you for using SAVTM food processing machine, in order to facilitate your correct operation of the product, please read this manual carefully before use. Please carefully read the first chapter of "safety precautions".

(The technical specifications of the specification of the subject to change, without

notice)

Catalog

Preface.....	1
Chapter one Safety precautions.....	2
Chapter two Parts and functions.....	3
Chapter three How to use.....	4-12
Chapter four Maintenance	12
Chapter five Safety Index.....	13
Chapter six Fault Analysis & Removal.....	13

Preface

Thank you for using lion witter brand food processing machine. In order to correctly use and maintenance of the products, we have specially prepared this manual, please you in before using the product, carefully read the instruction, and proper preservation for future reference.

This specification applies only to SAVTM company "JE230-24M00" series of food processing machine, SAVTM company reserves the right of final interpretation. All content for users to use and maintain reference, matters, welcome the customers to the company's customer service consulting. Book deficiencies, users are welcome to put forward valuable suggestions, let the lion witter brand food processing machine can make your life more warm, convenient and health.

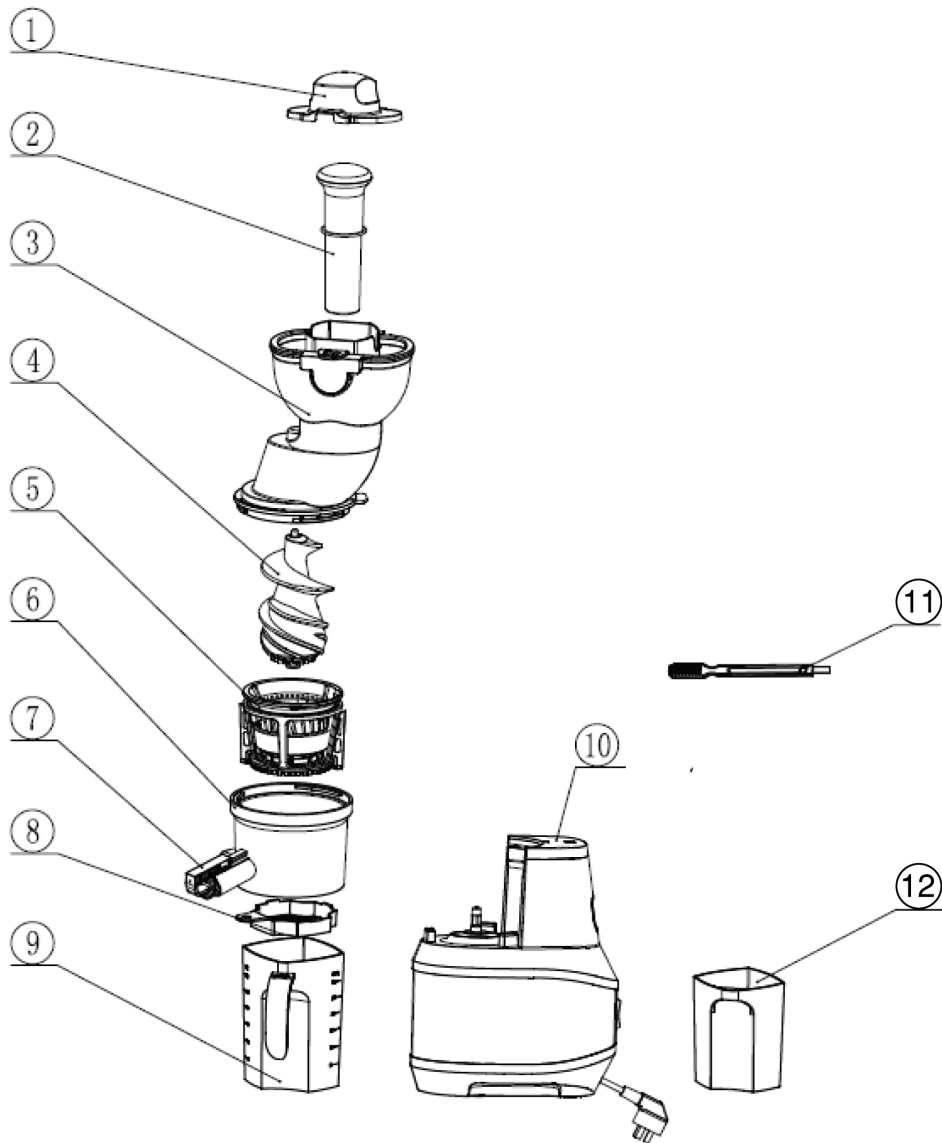
Chapter one Safety precautions

1. The input voltage is 220-240 V ~ 50Hz, please confirm before use;
2. This product belongs to the Y connection; if the supply cord is damaged, to avoid danger, by the manufacturer or its repair department or similar full-time staff to be replaced;
3. Product such as the need to repair, please contact our customer service department, or directly to the company designated repair repair, do not self demolition, to avoid danger;
4. Before any part removed, install or adjust the product, please be sure to disconnect the power supply;
5. Before use, please check the power cord, plug, juicing network, screw and other parts are damaged, if found damaged please stop using the product, please contact our customer service department, do not disassemble repair, in order to avoid danger;
6. The power supply is switched on before, please ensure that the detachable parts installed in place, and the container must be fully tighten the cover container, happen to avoid product work juice leakage, the container cover off the abnormal;
7. Products with intelligent protection components, due to too much power to stop working after the automatic protection will products used in the process, the need to continue to use please wait for 1 minutes can restart, this method is advantageous to extending the service life of the product;
8. Products in the process of work, if there is overload or blockage, will stop automatically restart, if still locked rotor, it is recommended to clean the feeding barrel ingredients, continue to use;
9. Food should be cut into small pieces, to be placed in the feeding cylinder is appropriate; nuclear, hard seed, thick skin or shell ingredients, please remove it after processing;
10. This product is not suitable for pressing too hard, fibers more ingredients, such as ice, coconut, sugar cane juice, such food is easy to get stuck, slag, lead to the damage of components, thus affecting the service life of the product;
11. Add ingredients, pushing the ingredients of the force is not too big, to just can be cut into the appropriate ingredients;
12. Products work, is prohibited in the feed inlet, to prevent harm; it is prohibited to use any object instead of pushing rod to push the material to prevent the object into contact with a screw member, so that the product is damaged, especially the elderly and children;
13. While working, it is strictly prohibited to eye close to the material inlet, to prevent accidents;
14. The various parts of the products are not allowed to use the microwave oven disinfection, to avoid thermal deformation damage. Contact with food related parts materials comply with food grade certification requirements, clean, sanitary, reliable;
15. Some ingredients in the pressed after filtering net component, screw, a

16. container cover and other accessories may stain, belongs to the normal phenomenon, does not affect the consumption of dyeing, healthy;
16. Do not put the body into the water or other liquid, nor rinse in water or other liquids; each component is strictly prohibited high temperature above 60 DEG cleaning.
17. Do not use steel wool, abrasive cleaning agents or corrosive liquids (e.g. petrol or acetone to clean the product);
18. The product should be stored to the reach of children. Do not let the body is not perfect, sensory or mental disorder or lack of experience with and knowledge of the people (including children) to use or play with the products;
19. Do not use this product to any component in the dishwasher;
20. This product is only suitable for family use;
21. This product components do not heat;
22. This product is a class I appliances, socket ground must be kept in good grounding.

Chapter two Parts and functions

Juicer parts :



2	pusher	Slowly push the ingredients for.
3	Feeding cylinder	The main components of the juice, is provided at the top of the feeding port, used for placing food.
4	Screw	Squeeze juice of the major component.
5	filter component	The main components of the juice, the juice, slag separation, and the cleaning vessel and the filtering net bracket on the juice and slag.(with small holes)
6	Container	The main components of juicing.
7	juice mouth	Pull-out type so that the juice from the juice outlet or blocked
8	Fruit residue screen cover	Filtration mouth and out of juice
9	Juice cup	Holding the mouth and out the juice juice
10	Host	The key parts of the main shell, motor, providing power.
11	Brush	Brush away the residual slag mouth
12	slag receiving cup	Containing fruit slag out of his mouth.

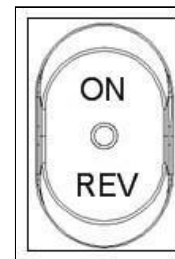
Parts name and function:

NO	Part name	Function
1	Dust proof	Cover the juice cup assembly, prevent the dust in under the condition of no use

Chapter Three How to use

In the first before using the product, please wash thoroughly and food contact parts (see Chapter fourth for maintenance and maintenance ")

Key operation: (the product is provided with a protective switch, do not cover the lid, the product can't work.)



Button "ON": Press it, product began to work. If you want to stop, press Button "REV", Make the switch back to the "OFF" position.

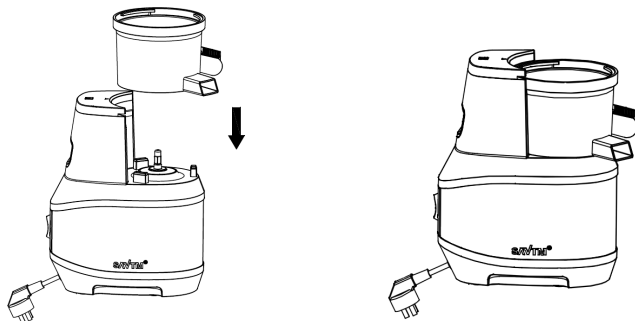
Button "REV": Press it and hold, when it slag and stall. Screw began to reverse. Release the button and press Button "ON", it go back to normal work.

One、 How to use

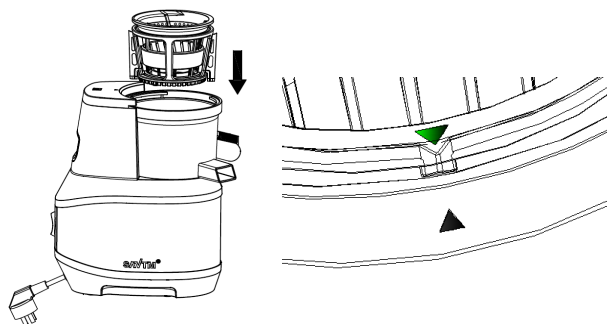
**Please install and use the product according to the following procedure :
Juice function (Demolition method is the reverse order of the assembly method)**

Confirm the bottom of silicone plug is installed before installing the juicer container.
If not, the juice will flow out or the juice rate will be reduced.

1. Align the three holes on the juice cup with the three bulges on the base of host, put the juicer container on the host.



2. Install filter components (the triangle mark on the filter must be aligned with the one on the juice container)

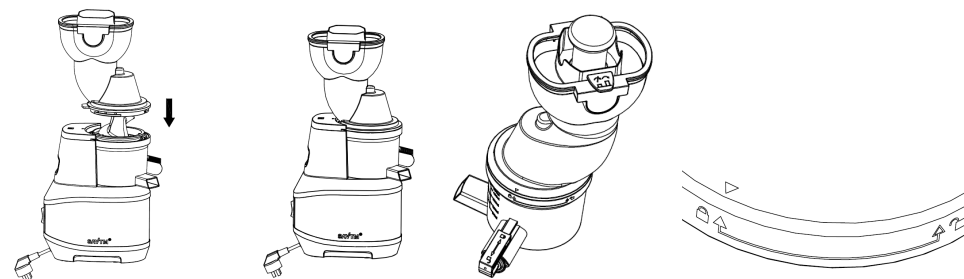


Arrow is at the top of the filter holder, the arrow is relatively small, look for it carefully.

3. Align juice screw with the center of filter bracket, then rotate and insert it.

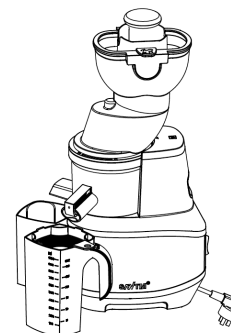
·Filter bracket and screw shaft without the correct installation, will not be able to cover the lid on

4. Align the triangle on the lid with the unlock mark on the juice container, then clockwise rotate it, align the triangle with the lock mark, that is completely locked. Otherwise it is unlocked.

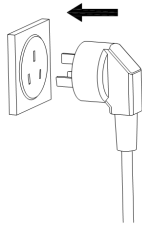


5. Put cup on the both sides of juice mouth and slag door, put pusher on.

·Do not put a spoon, chopsticks and other things into the inlet



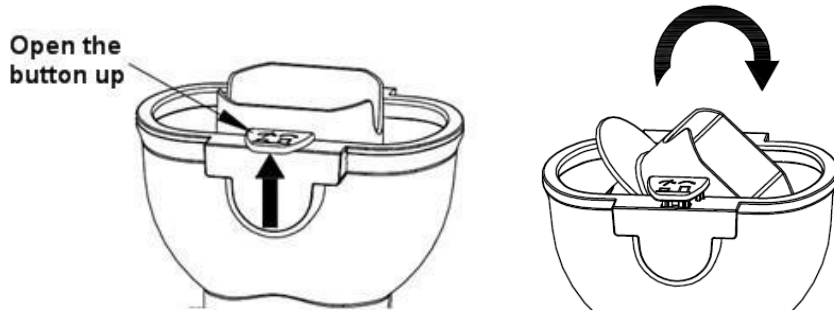
6. Connect the power supply



Button "ON": Press it, product began to work. If you want to stop, press Button "REV", Make the switch back to the "OFF" position.

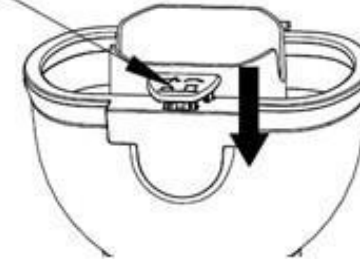
Button "REV": Press it and hold, when it slag and stall. Screw began to reverse. Release the button and press Button "ON", it go back to normal work.

- Wash the ingredients and cut into the inlet size, put them on the tray
 - Cut the spinach into small pieces before squeezing, and proper control the feed rate
 - Remove the nucleus, hard seeds, thick or crust of the ingredients before squeezing
 - Choose the appropriate ingredients, see "Chapter III How to use" Section Two
- Put the ingredients into the feed inlet, push them with pusher.
 - Open the button up, when squeeze apples or ingredients bigger than feed inlet, than put the ingredients into the feed inlet and flip into juice container

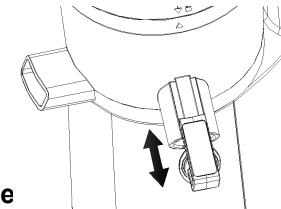


- Shut down the button, and lock swivel bracket when squeeze small volume of fruits such as tomatoes, small orange, peeled pomegranate etc., then put the ingredients into feed inlet.

Shut down the button



- Press Button "ON/OFF" when food is processed and no more juice flow out. After the motor and screw stop completely, take the juice cup away from juice mouth and slag door
 - Juice mouth can adjust the quantity of juice with pull-out and easy to clean



- Fresh fruit juice is recommended as possible, exposed to the air a long time, taste and nutritional value will be affected.

Chapter Four : Maintenance

- Close the "Switch" and power off before cleaning
- Cleaning the machine timely after use
- Do not put the product into water or other liquid. Or washed by water or other liquid.
- It should be keep in a dry place and avoid the sunshine
- Make sure the machine is clean and dry before using
- Refer the following dismounting steps before clean

Chapter Five: Safety Index

Input Voltage	220-240V~
Power	250W
Frequency	50Hz
Continuous working period	≤20 Min
Spacing interval	≥5 Min



Chapter Six: Fault Analysis & Removal

Fault phenomenon	Fault Analysis	Fault Removal
Push the "Switch" and No feedback	1. Check the Power cord and confirm it is inserted Long time working, and protected intelligently	1. Insert the Power cord 2. Restart after 20-30 mins
Smell from the motor running, at the first few time use	It's common for new motor	Send to our maintainece point for repair if it is still have smell
Stop working at midway	1. Too much food and fruit in the feeling tube which caused overload or block uo then ceased 2. Long time working, and protected intelligently	1. Decrease adding food & fruit and push the stick slightly. 2. Restart after 20-3- mins
Much fruit drug contain in juice	Juice net damaged	Change a new juice net



Note:

- If the product need to be repaired, please contact to our customer service department, or go to directly to our maintenance point to repair., do not dismantle it by yourself, in order to avoid danger.
- National Service Hotline: 400-100-0811
- The Company designated repair details see the warranty card.