

PHILIPS

HD4515



EN User manual

AR دليل المستخدم

VI Hướng dẫn sử dụng



© 2022 Philips Domestic Appliances Holding B.V.
All rights reserved.
6608.000.0811.8 (01/07/2022)



English

1 Important

Read this user manual carefully before you use the Rice cooker and save it for future reference.

Danger

- The appliance must not be immersed.

Warning

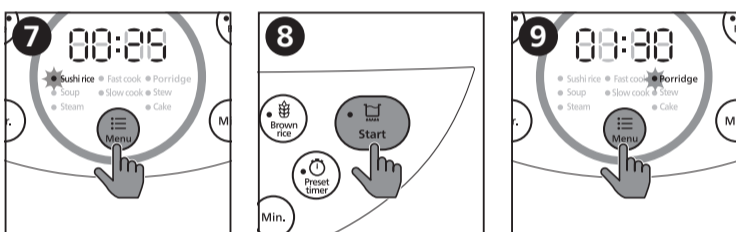
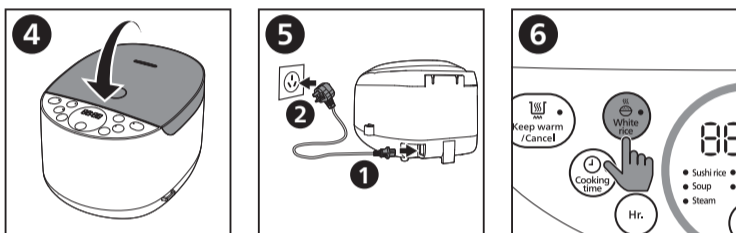
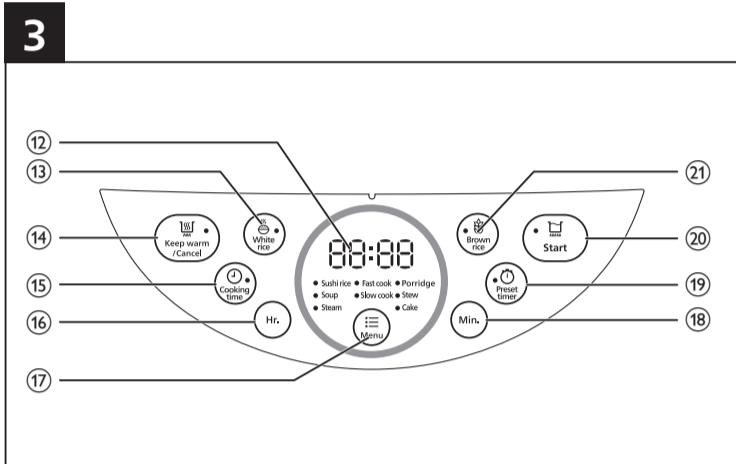
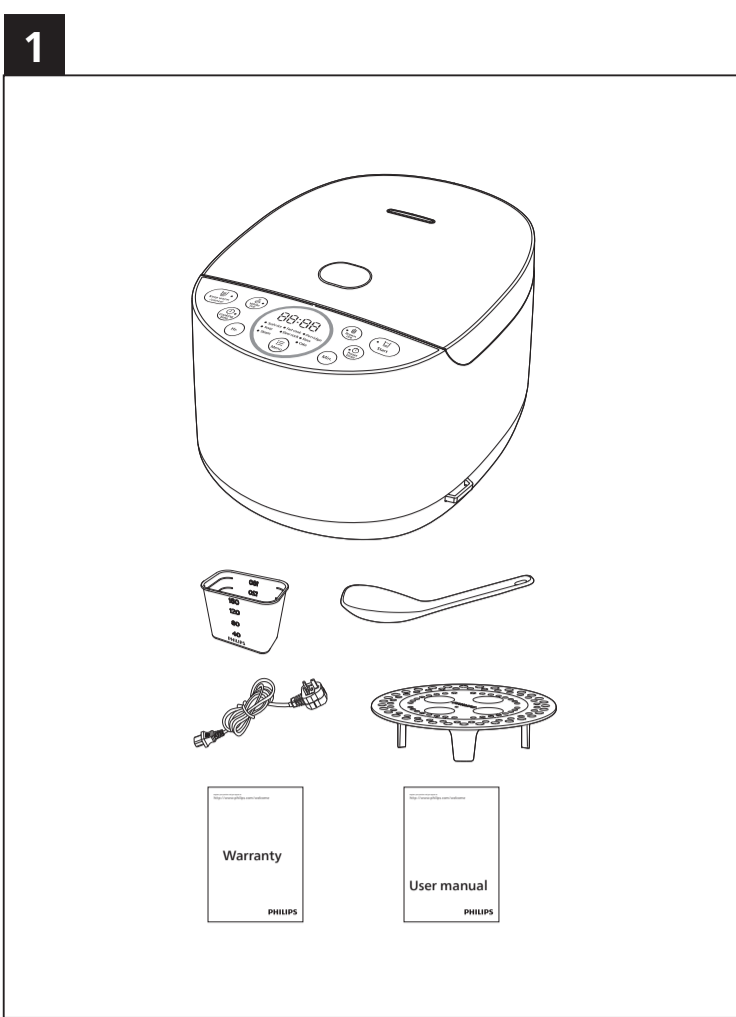
- This appliance is not intended for use by persons (including children) with reduced physical sensory or mental capabilities, or lack of experience and knowledge, unless they have been given supervision or instruction concerning use of the appliance by a person responsible for their safety.
- Children should be supervised to ensure that they do not play with the appliance.
- This appliance should be positioned in a stable situation with the handles (if any) positioned to avoid spillage of the hot liquids.
- This appliance is intended for normal household use only. It is not intended for use in environments such as staff kitchens of shops, offices, farms or other work environments. Nor is it intended to be used by clients in hotels, motels, bed and breakfasts and other residential environments.
- If the power cord set is damaged, it must be replaced by a cord set available from the manufacturer.
- The appliance is not intended to be operated by means of an external timer or a separate remote-control system.
- Check if the voltage indicated on the appliance corresponds to the local power voltage before you connect it.
- Only connect the appliance to a grounded power outlet. Always make sure that the plug is inserted firmly into the power outlet.
- Do not use the appliance if the plug, the power cord, the inner pot, the sealing ring, or the main body is damaged.
- Do not let the power cord hang over the edge of the table or worktop on which the appliance stands.
- Make sure the heating element, the temperature sensor, and the outside of the inner pot are clean and dry before you put the plug in the power outlet.
- Do not plug in the appliance or press any of the buttons on the control panel with wet hands.
- WARNING:** Make sure to avoid spillage on the power connector to avoid a potential hazard.
- WARNING:** Always follow the instructions and use the appliance properly to avoid potential injury.
- According to the instructions prescribed in this user manual, use a soft damp cloth to clean the surfaces in contact with food and make sure to remove all the food residues stuck to the appliance.
- Don't place the power cord under the appliance when in use.
- When placing the steaming basket, avoid touching the side wall of the inner pot, otherwise it may cause deformation due to high temperature.

Caution

- CAUTION:** Surface of the heating element is subject to residual heat after use.
- Never use any accessories or parts from other manufacturers or that Philips does not specifically recommend. If you use such accessories or parts, your guarantee becomes invalid.
- Do not expose the appliance to high temperatures, nor place it on a working or still hot stove or cooker.
- Do not expose the appliance to direct sunlight.
- Place the appliance on a stable, horizontal, and level surface.
- Always put the inner pot in the appliance before you put the plug in the power outlet and switch it on.
- Do not place the inner pot directly over an open fire to cook rice.
- Do not use the inner pot if it is deformed.
- The accessible surfaces may become hot when the appliance is operating. Take extra caution when touching the appliance.
- Beware of hot steam coming out of the steam vent during cooking or out of the appliance when you open the lid. Keep hands and face away from the appliance to avoid the steam.
- Do not lift and move the appliance while it is operating.
- Do not exceed the maximum water level indicated in the inner pot to prevent overflow which might cause potential hazard.
- Do not place the cooking utensils inside the pot while cooking, keeping warm or reheating rice.
- Only use the cooking utensils provided. Avoid using sharp utensils.
- To avoid scratches, it is not recommended to cook ingredients with crustaceans and shellfish. Remove the hard shells before cooking.
- Do not insert metallic objects or alien substances into the steam vent.
- Do not place a magnetic substance on the lid. Do not use the appliance near a magnetic substance.
- Always let the appliance cool down before you clean or move it.
- Always clean the appliance after use. Do not clean the appliance in a dishwasher.
- Always unplug the appliance if not used for a longer period.
- If the appliance is used improperly or for professional or semiprofessional purposes, or if it is not used according to the instructions in this user manual, the guarantee becomes invalid and Philips refuses liability for any damage caused.

Electromagnetic fields (EMF)

This Philips appliance complies with all applicable standards and regulations regarding exposure to electromagnetic fields.



2 Your Rice cooker

Congratulations on your purchase, and welcome to Philips! To fully benefit from the support that Philips offers, register your product at www.philips.com/welcome

3 What's in the box (fig. 1)

Rice cooker main unit	Measuring cup
Rice and soup 2 in 1 spoon	Power cord
Steaming basket	User manual
Warranty card	

4 Overview (fig. 2)

① Steam vent	⑦ Detachable inner lid
② Lid release button	⑧ Inner pot
③ Control panel	⑨ Water level indications
④ Heating element	⑩ Power socket
⑤ Main body	⑪ Cooker base

Control's overview (fig. 3)

⑫ Display screen	⑰ Menu button
⑬ White rice button	⑱ Minute button
⑭ Keep-warm/Cancel button	⑲ Preset time button
⑮ Cooking time button	⑳ Start button
⑯ Hour button	㉑ Brown rice button

5 Using the Rice cooker

Before first use

- Take out all the accessories from the inner pot. Remove the packaging material of the inner pot.
- Before first use, boil water and clean the Rice cooker.
- Clean the parts of the Rice cooker thoroughly before using it for the first time (see chapter "Cleaning and Maintenance").

Note

- Make sure all parts are completely dry before you start using the Rice cooker.

Cooking rice

Cooking function	Estimated cooking time	Time regulation	Preset time
White rice	45 minutes	/	1-24 hours
Brown rice	1 hour	/	1-24 hours
Fast cook	25 minutes	/	1-24 hours
Sushi rice	50 minutes	/	1-24 hours

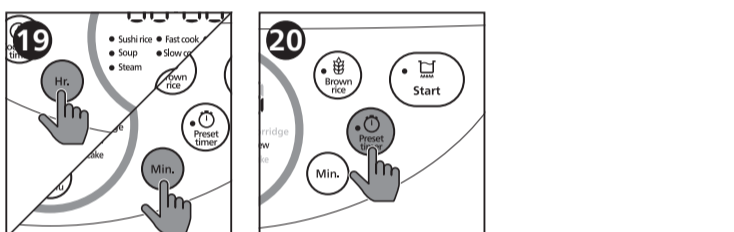
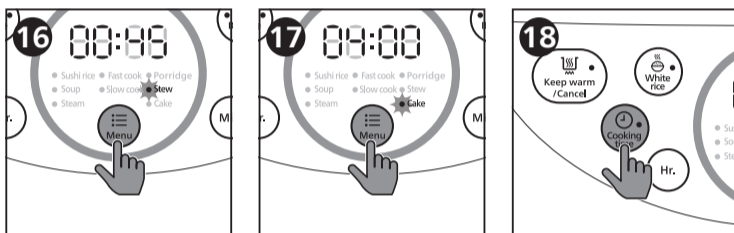
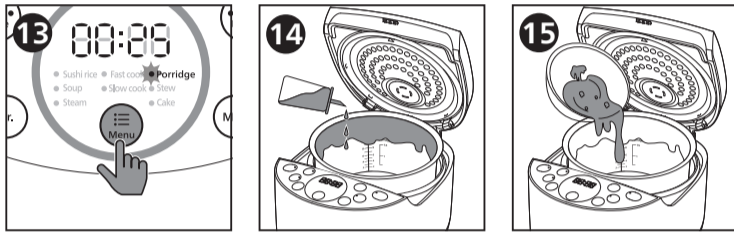
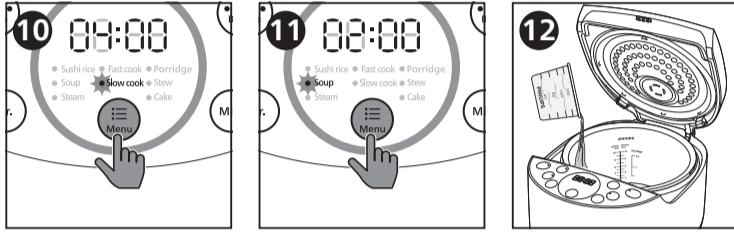
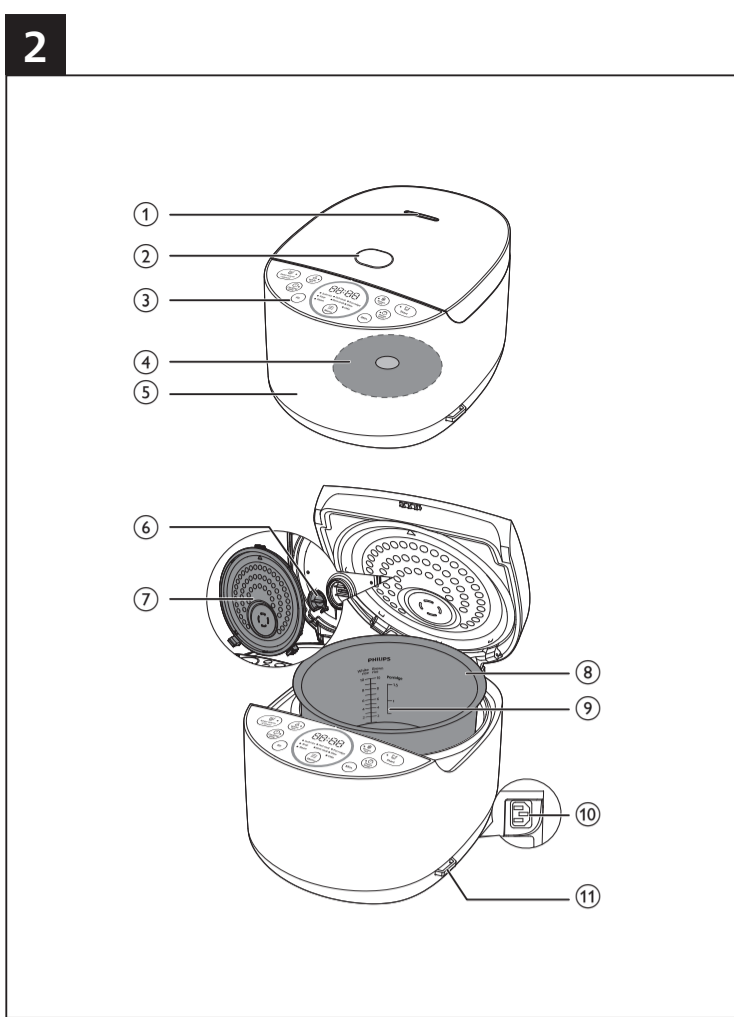
You can cook rice using the **White rice**, **Brown rice**, **Sushi rice** or **Fast cook** function.

- Measure rice using the measuring cup provided.
- Rinse rice, and place the washed rice in the inner pot.
- Add water to the level indicated on the scale inside the inner pot that corresponds to the number of cups of rice used. Then spread the rice evenly in the pot.
 - For instance, if you cook 4 cups of rice, add water up to the 4-cup level indicated on the scale.

Note

- The level marked inside the inner pot is just an indication. You can always adjust the water level for different types of grains and your own preference.
- Besides following the water level indications, you may also add rice and water at 1:1-1.2 ratio for rice cooking.
- Do not exceed the volume indicated or exceed the maximum water level, as this may cause the appliance to overflow.
- For the fast cooking with a large amount of rice, it's recommended to open the lid after 10-15 minutes to make sure the optimal taste and cooking result.
- For **White rice**, **Brown rice** and **Sushi rice** function, the cooking time is calculated based on voltage 220V- within 8 cups of rice. If the voltage is lower than 220V- or with too much rice, the cooking time will be longer.
- The cooking time for **Sushi rice** is calculated based on 4 cups of rice. Longer cooking time is needed if the rice amount is larger.
- For **Sushi rice** function with 6 cups or more of rice, it's recommended to open the lid after 10 minutes in keep warm mode in order to get a better cooking result.

- Wipe off water outside of the inner pot and put it into the appliance.



Note

- Make sure that the outside of the inner pot is dry and clean, and that there is no foreign residue on the inside of the appliance.
- Close the lid (fig. 4), and put the plug in the power socket (fig. 5), and switch on the appliance.
 - Press the **White rice**, **Brown rice** button (fig. 6), the **Fast cook** or **Sushi rice** function by pressing the **Menu** button (fig. 7).
 - Press the **Start** button to start cooking (fig. 8).
 - When the cooking is finished, you will hear 4 beeps and the selected cooking function light will be off.
 - The Rice cooker will be in keep-warm mode automatically.
 - The keep-warm indicator lights up.

Note

- If the voltage is unstable at the area you live, it is possible that the Rice cooker overflows.
- After the cooking is finished, stir the rice and loosen it immediately to release excessive moisture for fluffy rice.
- Depending on the cooking conditions, the bottom portion of the rice may become slightly browned.
- Please stir rice after cooking, and you are recommended to consume it right after cooking for best nutrition and best taste. If you would like to keep rice for long hours and for many meals, it is best to keep rice in sealed plastic containers and keep them in the refrigerator and reheat it to avoid nutrient loss.
- If you want to change selection, you first need to press the **Keep warm/ Cancel** button.

Cooking porridge/Slow cook

Cooking function	Estimated cooking time	Time regulation	Preset time
Porridge	1.5 hours	1-4 hours	1-24 hours
Slow cook	4 hours	3-10 hours	1-24 hours

- Place ingredients and water into the inner pot.
- Follow steps 4 to 5 in "Cooking rice".

Note

- Do not exceed the maximum water level indicated in the inner pot, as this may cause the Rice cooker to overflow.
- Select the **Porridge** or **Slow cook** function by pressing the **Menu** button (fig. 9) (fig. 10).
 - Press the **Start** button to start cooking (fig. 8).
 - When the cooking is finished, you will hear 4 beeps and the selected cooking function light will be off. The Rice cooker will be in keep warm mode automatically.
 - The keep-warm indicator lights up.

Note

- You can use the **Porridge** function to steam food.
- You can use the **Slow cook** function to stew food.

Soup

Cooking function	Estimated cooking time	Time regulation	Preset time
Soup	2 hours	1-4 hours	1-24 hours

- Put beans and water into the inner pot.
- Follow steps 4 to 5 in "Cooking rice".

Note

- Do not exceed the maximum water level indicated in the inner pot, as this may cause the Rice cooker to overflow.
- Select the **Soup** function by pressing the **Menu** button (fig. 11).
 - Press the **Start** button to start cooking (fig. 8).
 - When the cooking is finished, you will hear 4 beeps and the selected cooking function light will be off. The Rice cooker will be in keep warm mode automatically.
 - The keep-warm indicator lights up.

Steaming food

Cooking function	Estimated cooking time	Time regulation	Preset time
Steam	25 minutes	5-59 minutes	/

- Measure a few cups of water with the measuring cup.

Note

- To avoid boil-dry, add 2 scales of water at least into the inner pot.

- Pour the water into the inner pot (fig. 12).
- Put the steam basket into the inner pot.
- Put the food into the steam basket.
- Follow steps 4 to 5 in "Cooking rice".

Note

- Do not exceed the maximum water level indicated in the inner pot, as this may cause the Rice cooker to overflow.
- Add 5 cups of water at least to the inner pot when using the Steam function.

- Select the **Steam** function by pressing the **Menu** button (fig. 13).
- Press the **Start** button to start cooking (fig. 8).
- When the cooking is finished, you will hear 4 beeps and the selected cooking function light will be off. The Rice cooker will be in keep warm mode automatically.
 - The keep-warm indicator lights up.

Cake

Cooking function	Estimated cooking time	Time regulation	Preset time
Cake	45 minutes	/	/

- Whisk the ingredients for cake well.
- Coat the inner pot with some butter or cooking oil (fig. 14), and then pour the cake mixture into it (fig. 15).
- Follow steps 5 and 6 in "Cooking rice".
- Select the **Cake** function by pressing the **Menu** button (fig. 16).
- Press the **Start** button to start cooking (fig. 8).
- When the cooking is finished, you will hear 4 beeps and the selected cooking function light will be off. The Rice cooker will be in keep warm mode automatically.
 - The keep-warm indicator lights up.
- Open the lid and carefully take out the inner pot to cool down.
- After the inner pot is cool down, put a plate or cake rack on top of the pot, and then flip over to take the cake out.

Note

- Use a kitchen glove or a cloth, as the plate will be very hot.
- You can cook rice while steaming food. Do not exceed the volume indicated, as this may cause the Rice cooker to overflow.
- You can adjust the water level as needed.

How to cook cakes

- Preparation of raw material:
 - Small quantity: 3 eggs, 100g white sugar (about 2/3 cup), 100g cake powder (about 1 cup), 50g butter (about 1/3 cup), 18g milk (about 1/10 cup)
 - Large quantity: 5 eggs, 180g white sugar (about 1 cup), 180g cake powder (about 2 cups), 80g butter (about 2/3 cup), 36g milk (about 1/5 cup)

Note

- The user may adjust the raw material proportion as per personal tastes.
 - Do not put in too much raw material, or the quality will be affected and even underdone.
- Mix round white sugar with egg, till the bubbles appear.

Note

- If the temperature of egg is too low, the user may use insulated water of 40°C to warm it. The cake made will be soft, loose and elastic.
- Whisk the egg, till the egg material flows down the egg whisk as silk.
- The vessel and egg whisk must be clean, if they have oil, the bubbles will be difficult to appear.
- Do not whisk the egg in the inner pot, to avoid scratching the nonstick coating.

- Add cake powder, and averagely mix them round by a wooden spoon.

Note

- Whisk the wooden spoon so as to fully mix the material round.

- Add milk and melted butter, quickly mix them round.

Note

- Melt the butter into liquid by insulated warm water.

Stew

Cooking function	Estimated cooking time	Time regulation	Preset time
Stew	4 hours	3-6 hours	1-24 hours

- Put the ingredients and water into the inner pot.
- Follow steps 4 to 5 in "Cooking rice".

Note

- Do not exceed the maximum water level indicated in the inner pot, as this may cause the Rice cooker to overflow.
- Select the **Stew** function by pressing the **Menu** button (fig. 17).
 - Press the **Start** button to start cooking (fig. 8).
 - When the cooking is finished, you will hear 4 beeps and the selected cooking function light will be off. The Rice cooker will be in keep warm mode automatically.
 - The keep-warm indicator lights up.

Adjusting the cooking time

You can set the cooking time for some menus. Refer to the cooking time table in each chapter for the detailed regulating range.

- Choose the function you need.
- To set a different cooking time, press the **Cooking time** button (fig. 18), and the default cooking time starts flashing on the display.
- Press the **Hr** button to set the hour unit (fig. 19).
- After the hour unit is set, wait for a few seconds before the hour unit is confirmed, and the minute unit starts flashing on the display.
- Press the **Min.** button to set the minute unit (fig. 19).
- Press the start button to confirm the cooking time and start the cooking process.

Note

- You can adjust the cooking time only in the **Porridge**, **Soup** and **Steam** function.

Preset time for delayed cooking

You can preset the delayed cooking time for some menus. The preset timer is available from 1 hour up to 24 hours.

Note

- The preset timer is not available in the **Cake** function.
 - The cooking process will be finished by the time the preset time has elapsed. If the preset time you set is shorter than the cooking time, the appliance will start the cooking process immediately.
- Choose the function you need.
 - To preset time for delayed cooking, press the **Preset timer** button , and the default preset time starts flashing on the display (fig. 20).
 - Press the **Hr.** button to set the hour unit (fig. 19).
 - After the hour unit is set, wait for a few seconds before the hour unit is confirmed, and the minute unit starts flashing on the display.
 - Press the **Min.** button to set the minute unit (fig. 19).
 - Press the start button to confirm the preset timer and start the cooking process.

6 Cleaning and Maintenance

Note

- Unplug the Rice cooker first and allow the unit to cool down before you start cleaning the unit
- Wait until the Rice cooker has cooled down sufficiently before cleaning it.

Interior

- Inside of the top lid and the main body:
- Wipe with a damp cloth.
 - Make sure to remove all the food residues stuck to the Rice cooker.
- Heating element:
- Wipe with a damp cloth.
 - Remove food residues with a damp cloth.

Exterior

- Surface of the top lid and outside of the main body:
- Wipe with a cloth damped with soap water.
 - Only use soft and dry cloth to wipe the control panel.
 - Make sure to remove all the food residues around the control panel.

Accessories

- Spatala, inner pot, and steam vent cap:
- Soak in hot water and clean with sponge.

7 Recycling

Do not throw away the product with the normal household waste at the end of its life, but hand it in at an official collection point for recycling. By doing this, you help to preserve the environment. Follow your country's rules for the separate collection of electrical and electronic products. Correct disposal helps prevent negative consequences for the environment and human health.

8 Guarantee and service

If you need service or information, or if you have a problem, visit the Philips website at www.philips.com or contact the Philips Customer Care Center in your country. You can find its phone number in the worldwide guarantee leaflet. If there is no Customer Care Center in your country, go to your local Philips dealer.

9 Specifications

Model Number	HD4515
Rated power output	790-940W
Rated capacity	5.0L
Rice capacity	1.8L

10 Troubleshooting

If you encounter problems when using this Rice cooker, check the following points before requesting service. If you cannot solve the problem, contact the Philips Consumer Care Center in your country.

Problem	Solution
The light on the button does not go on.	There is a connection problem. Check if the power cord is connected to the Rice cooker properly and if the plug is inserted firmly into the power outlet. The light is defective. Take the appliance to your Philips dealer or a service center authorized by Philips.
The rice is not cooked.	There is not enough water. Add water according to the scale in the inside of the inner pot. Make sure that there is no foreign residue on the heating element and the outside of the inner pot before switching the Rice cooker on. The heating element is damaged, or the inner pot is deformed. Take the Rice cooker to your Philips dealer or a service center authorized by Philips.
The rice is too dry and not well cooked.	Add more water to the rice, and cook for a bit longer.
The Rice cooker does not switch to the keep-warm mode automatically.	You might have pressed the keep-warm button before pressing the start button. In this case the Rice cooker will be in standby mode after the cooking is finished. The temperature control is defective. Take the appliance to your Philips dealer or a service center authorized by Philips.
The rice is scorched.	You have not rinse the rice properly. Rinse the rice until the water runs clear.
Water spills out of the Rice cooker during cooking.	Make sure that you add water to the level indicated on the scale inside the inner pot that corresponds to the number of cups of rice used.
Rice smells bad after cooking.	Clean the inner pot with some washing detergent and warm water. After cooking, make sure the steam vent cap, inner lid and inner pot is cleaned thoroughly.

Tiếng Việt

1 Quan trọng

Đọc kỹ hướng dẫn sử dụng này trước khi sử dụng nồi cơm điện và cất giữ tài liệu để tiện tham khảo sau này.

Nguy hiểm

- Không được ngâm nhúng thiết bị.

Cảnh báo

- Thiết bị này không dành cho người dùng (bao gồm cả trẻ em) bị suy giảm năng lực về thể chất, giác quan hoặc tâm thần, hoặc thiếu kinh nghiệm và kiến thức, trừ khi họ được giám sát hoặc hướng dẫn sử dụng thiết bị bởi người có trách nhiệm đảm bảo an toàn cho họ.
- Trẻ em phải được giám sát để đảm bảo rằng chúng không chơi đùa với thiết bị này.
- Đặt thiết bị này trên một mặt phẳng vững chắc, gần tay cầm (nếu có) để tránh làm tràn nước nóng.
- Thiết bị này được thiết kế chỉ để dùng trong gia đình. Thiết bị không được thiết kế để sử dụng trong các môi trường như khu vực bếp cho nhân viên trong cửa hàng, văn phòng, trang trại hoặc các môi trường làm việc khác. Thiết bị cũng không được thiết kế để sử dụng bởi khách lưu trú tại khách sạn, nhà nghỉ, loại hình nhà trọ qua đêm có phục vụ ăn sáng và các môi trường cư trú khác.
- Nếu bộ dây nguồn bị hỏng, bạn phải thay bằng bộ dây nguồn do nhà sản xuất cung cấp.
- Thiết bị này không được thiết kế để hoạt động như bộ hẹn giờ cảm nóng hoặc hệ thống điều khiển từ xa riêng.
- Kiểm tra xem điện áp ghi trên thiết bị có tương ứng với điện áp nguồn nơi sử dụng trước khi nối thiết bị với nguồn điện.
- Chỉ nối thiết bị với ổ điện đã được nối đất. Luôn đảm bảo phích cắm được cắm chặt vào ổ điện.
- Không sử dụng thiết bị nếu phích cắm, dây điện, lồng nồi, vòng đệm, hoặc thanh nối bị hư hỏng.
- Không để dây điện treo trên cạnh bàn hoặc nơi chuẩn bị đồ ăn, nơi đặt thiết bị.
- Bảo đảm để nhiệt, bộ cảm biến

